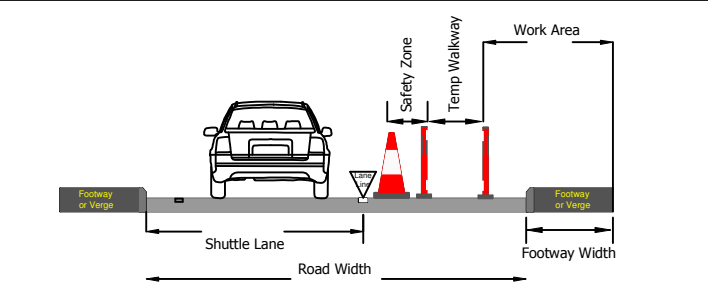


Centurion Traffic Management
3B, Haigh Park Road
Stourton
Leeds
LS10 1RT
Tel: 0113 277 5360
E-mail: info@centuriontraffic.com
www.centuriontraffic.com

Date: 16/01/17
Scheme: Coach Road, Carnforth
Traffic Management: Full Closure

Measurement Key

- Road Width = N/A
- Shuttle Lane = N/A
- Sideways Safety Zone = N/A
- Longways Safety Zone = N/A
- Footway Width = N/A
- Temporary Footway Width = N/A
- Work Area = N/A



Crown Copyright. All rights reserved.
Drawing to be read in conjunction with relevant method statement and risk assessment.
Please check for amendments before use.

Drawing Ref: MVR-CTM-1686

Scale: NTS
Drawn: MVR
Authorised / Approved: SW

Unauthorized reproduction infringes Crown Copyright and may lead to prosecution or civil proceedings.